

InB-RF-W1-H100-SMA Outdoor Antenna



INBYTE ELECTRONICS CO., LTD.

Tel: +86-755-23174939

Email: support@inbytecn.com

Web: www.inbytecn.com

Add: E239, Building 1, Hairong Haoyuan, Dalang South Road, Longhua, Shenzhen, China.

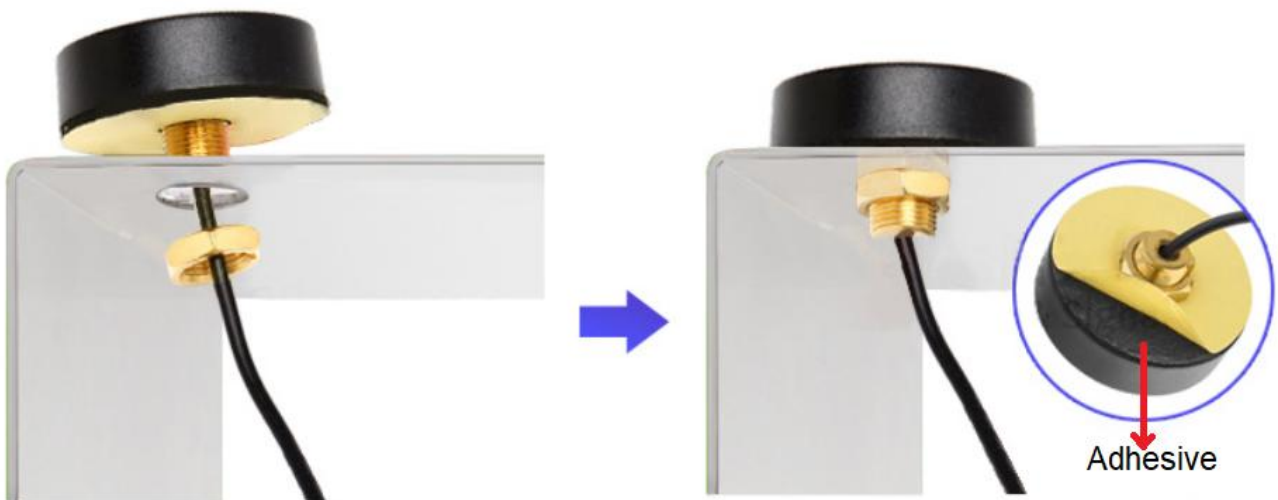
1. PRODUCT TECHNICAL SPECIFICATION

Electrical Specifications	
Frequency Range (MHz)	868MHZ
Input Impedance (Ω)	50
V.S.W.R	≤ 2.0
Gain (dBi)	5DBI
Polarization Type	Vertical
Power Capacity (w)	100
Mechanical Specifications	
Cable Length (mm)	1m (customized)
Connector Type	SMA male (customized)
Color	Black
The antenna size	$\Phi 46*14$ mm (Screws M12mm)

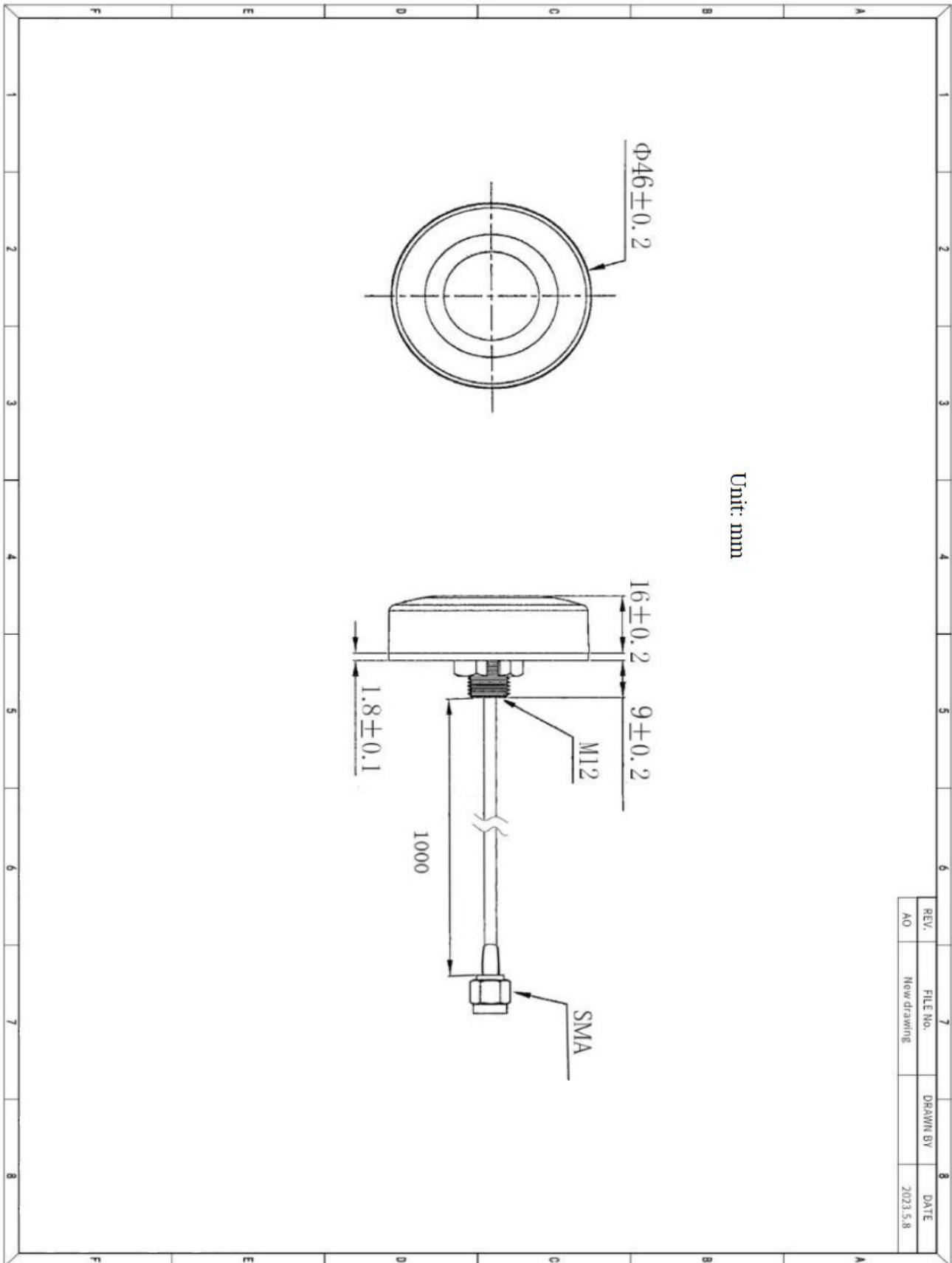
2. Product Pictures



How to fix the antenna?



3. DRAWING



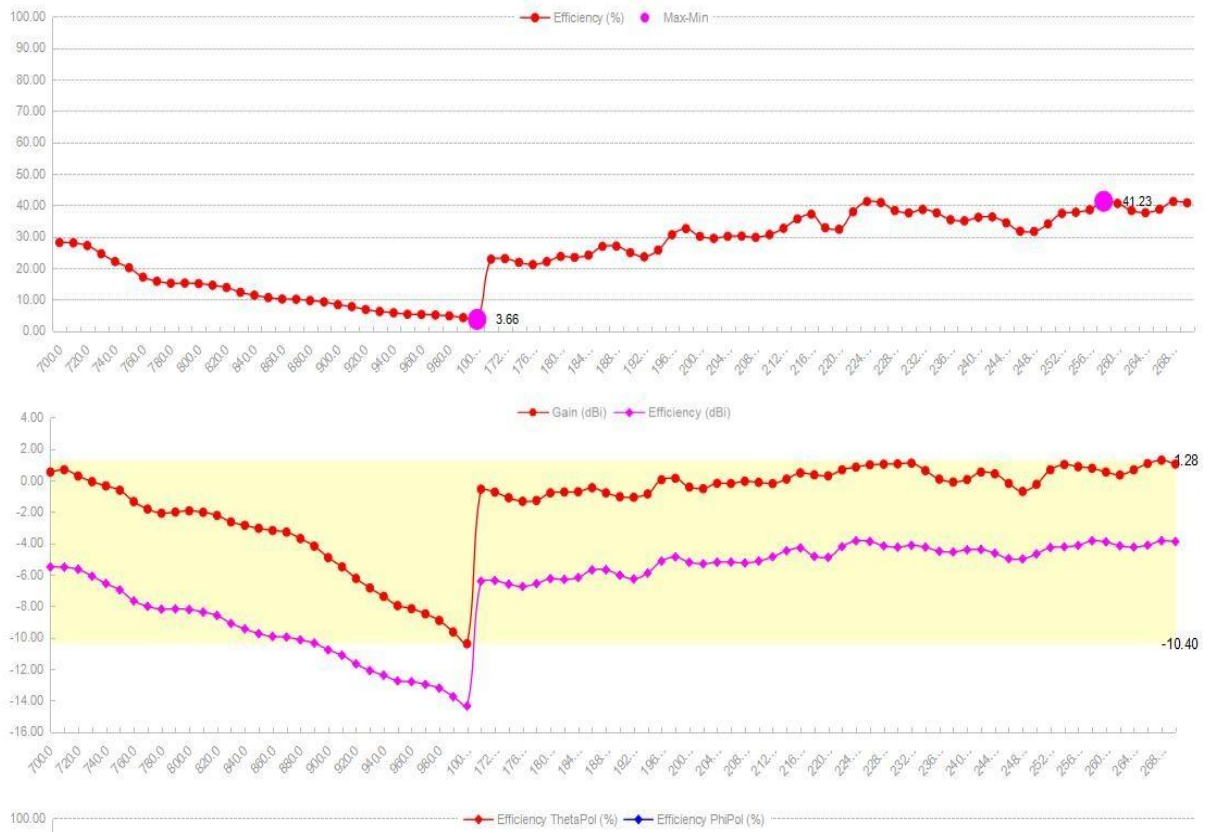
4. MECHAICAL CHARACTERISTICS

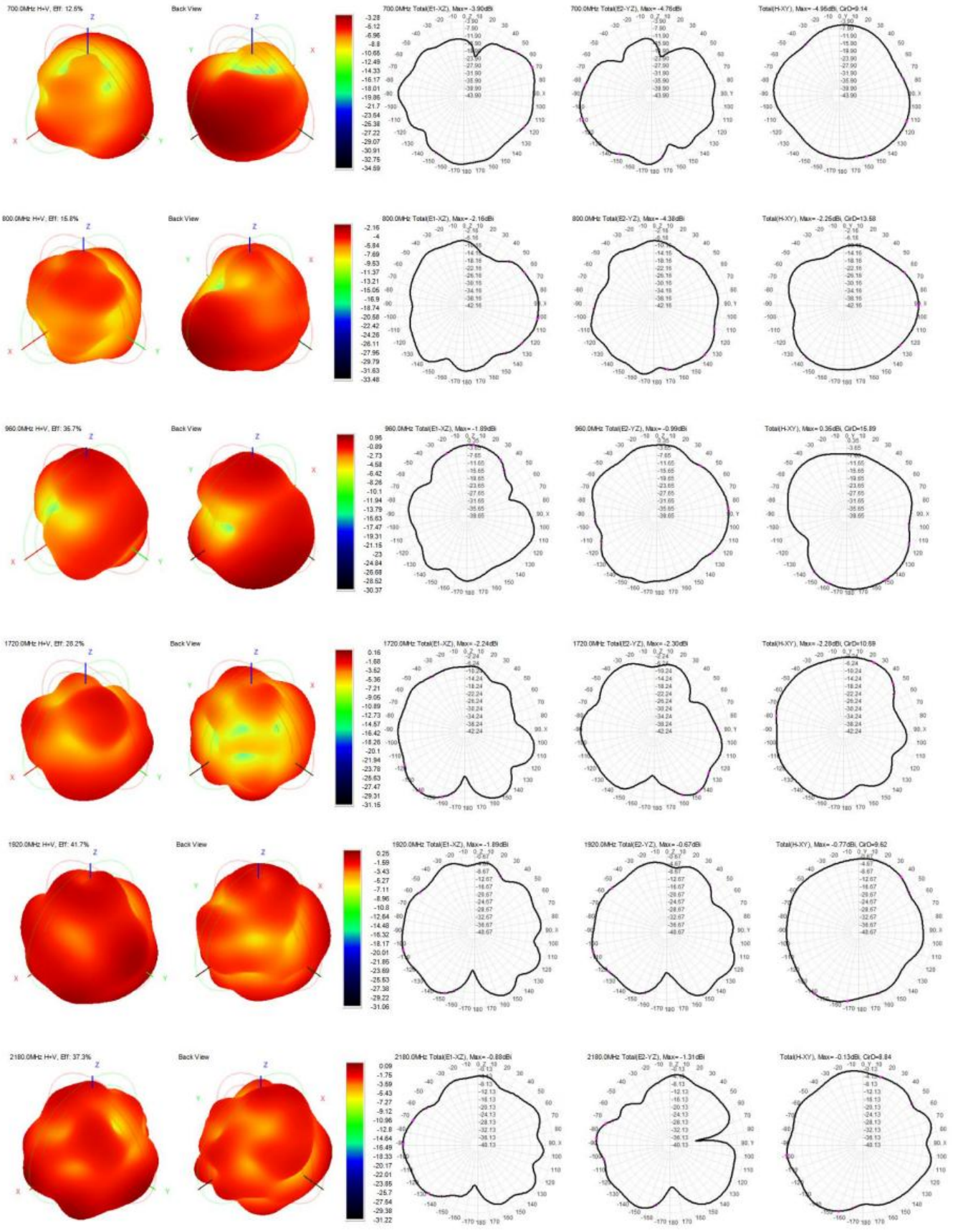
1	BENDING TEST	Put a load of 120g on the end of the wire 30CM away from the connector. After fixing the connector, perform a remote swing test. The left and right swing angles are 60 degrees each. Test the characteristics after 1,000 swings.	There is no sign of damage to the electrical performance after 1,000 swings.
2	STRENG TEST	A 15-pound static load is applied to the bottom of the pay-off end for one minute.	There is no sign of damage to mechanical or electrical performance.
3	PULLING FORCE	Use a tensile gauge to perform a tensile test between joints and wires.	It can withstand a pulling force of 7Kg without any damage to the electrical performance.
4	VIBRATION TEST	Vibrate in the X-axis direction for 120 minutes, the Y-axis direction for 120 minutes, and the Z-axis direction for 240 minutes with an amplitude of 1.10mm and a vibration frequency of 33.30Hz/sec.	There is no sign of damage to electrical performance.

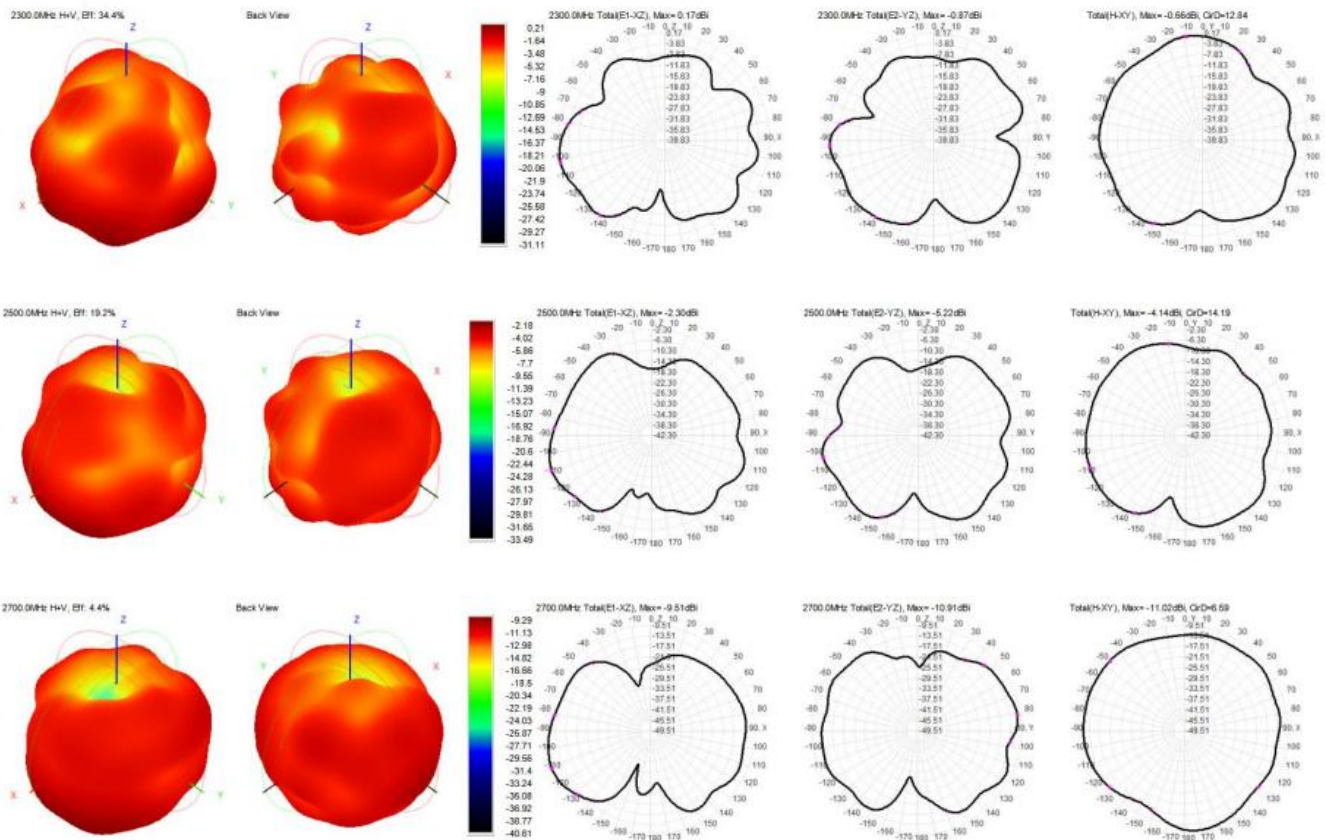
5. DURABILITY TEST

1	SAIT SPRAY TEST	<p>Salt spray test: according to GB1266-86 standard Distilled water: once distilled, PH6.5~7 Spray volume: 1.4me80cm²/h Compressed air pressure: 1Kgf/ cm² Test relative degree: 98°C Temperature: 45~47°C Pressure temperature: 35 °C Test time: 12hr</p>	All characteristic range is 30% of the initial value.
2	HEAT TEST	Put in 85+2°C for 96 hours, then keep in normal condition for 30min to test.	
3	HUMIDITY TEST	Put in 40+2°C and 90-95%RH for 96hours, after keep in normal condition for 30mins to test.	
4	COLD TEST	Put in 40+2°C for 96 hours, after keep in normal condition for 30mins to test.	

6. STATIONARY WAVE PATTERN







7. Caution

- 1) The antenna frequency must match the frequency of the wireless device.
- 2) When there is a straight-line communication obstacle, the communication distance will be correspondingly attenuated.
- 3) Please pay attention to the radiation direction of the antenna and avoid metal objects when installing, otherwise the signal attenuation will be very obvious
- 4) The ground absorbs radio waves, and the test effect is poor when close to the ground. It is recommended to increase the height.
- 5) This product has the best test performance with a 1-meter cable length. It is recommended to choose a 1-meter cable unless necessary.